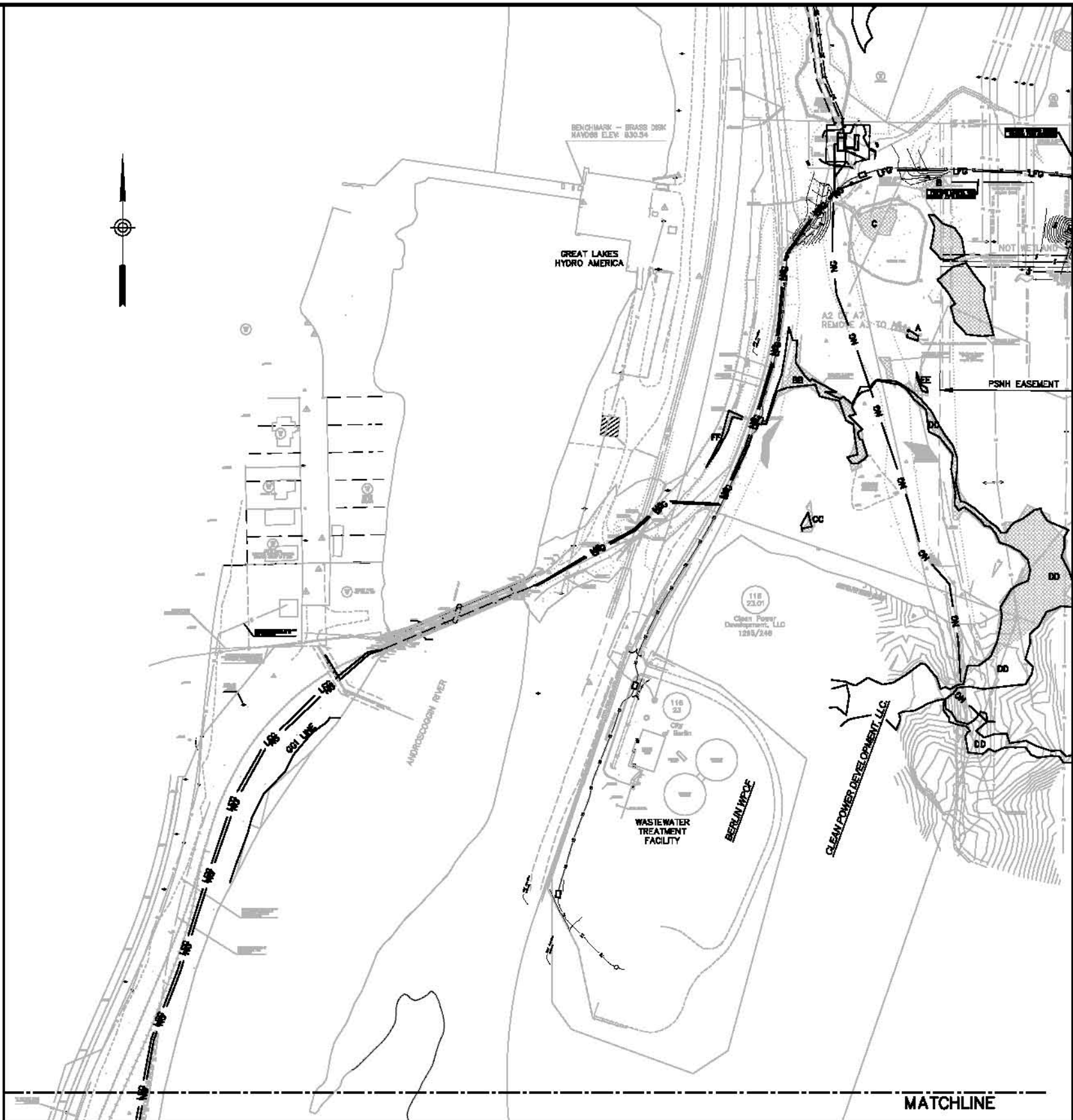
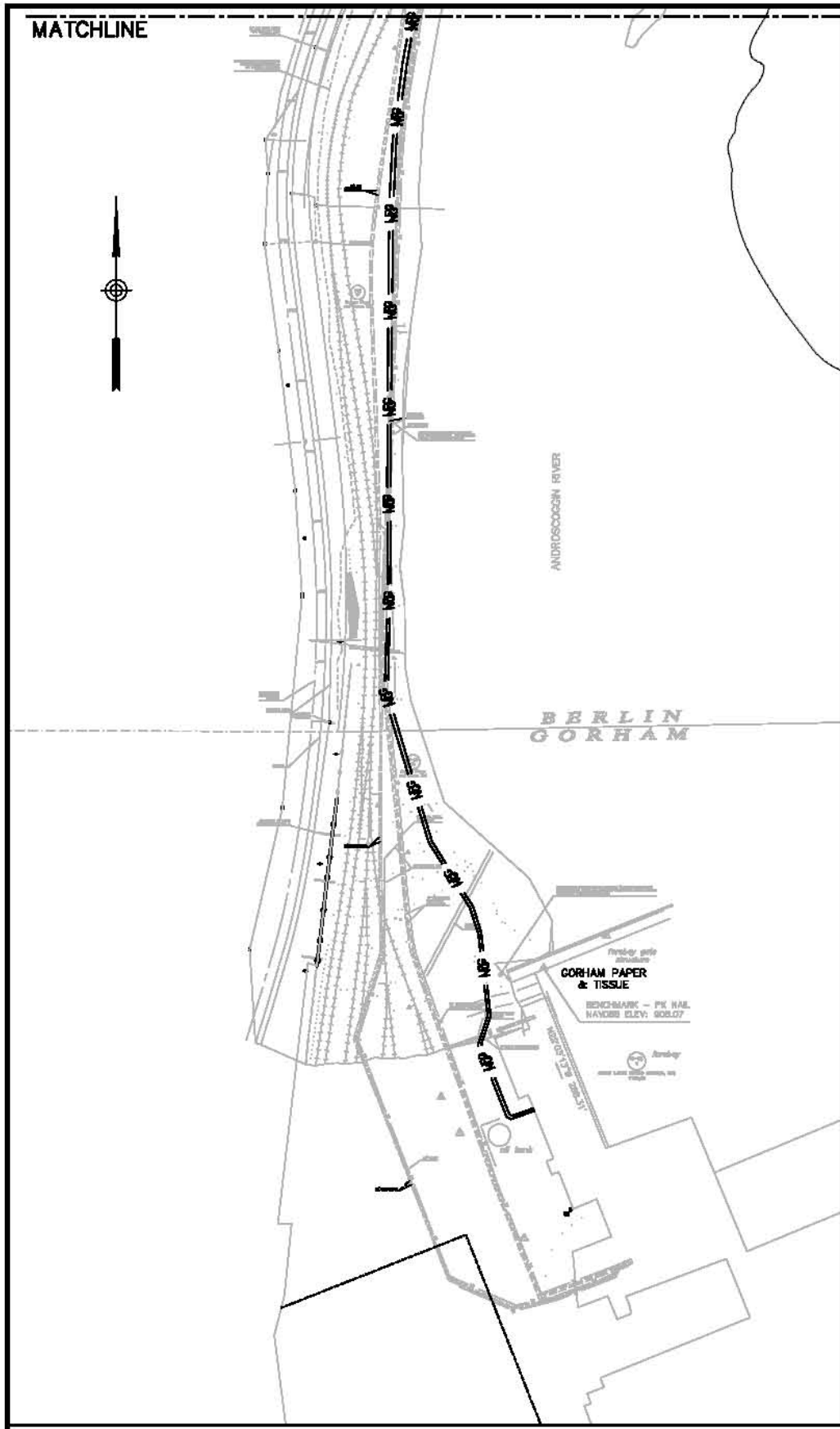


File Path: H:\Projects\10168-00-Gorham_Paper_Gen_Line\MAGUICV1181861 C200-C206.dwg, Layout: C200, Wed, Jul 20, 2011 - 3:37 PM, User: jmaguire

US VIEW: LMAN: QTB:

LOG:



| | | | | |
|-----|------------|---------------------|------|------|
| | | PROJ. MANAGER: JMM | SEAL | SEAL |
| | | CHIEF DESIGNER: MMD | | |
| | | REVIEWED BY: DATE | | |
| | | | | |
| | | | | |
| 1. | 10/12/2010 | PRELIMINARY | EY | |
| No. | DATE | DESCRIPTION | BY | |
| | | REVISIONS | | |

PRELIMINARY
NOT FOR CONSTRUCTION

| | |
|---------------|---------|
| SCALE: | |
| HORIZ.: | 1"=100' |
| VERT.: | |
| DATUM: | |
| HORIZ.: | |
| VERT.: | |
| 0 100 200 | |
| GRAPHIC SCALE | |



Maguire Group Inc.
Architects / Engineers / Planners
110 Corporate Drive, Suite 6
Portsmouth, New Hampshire 03801

GORHAM PAPER & TISSUE LLC.
PROPOSED OVERALL PLAN

BERLIN
NEW HAMPSHIRE

PROJ. No: 10186
DATE: 7/20/2011

C200

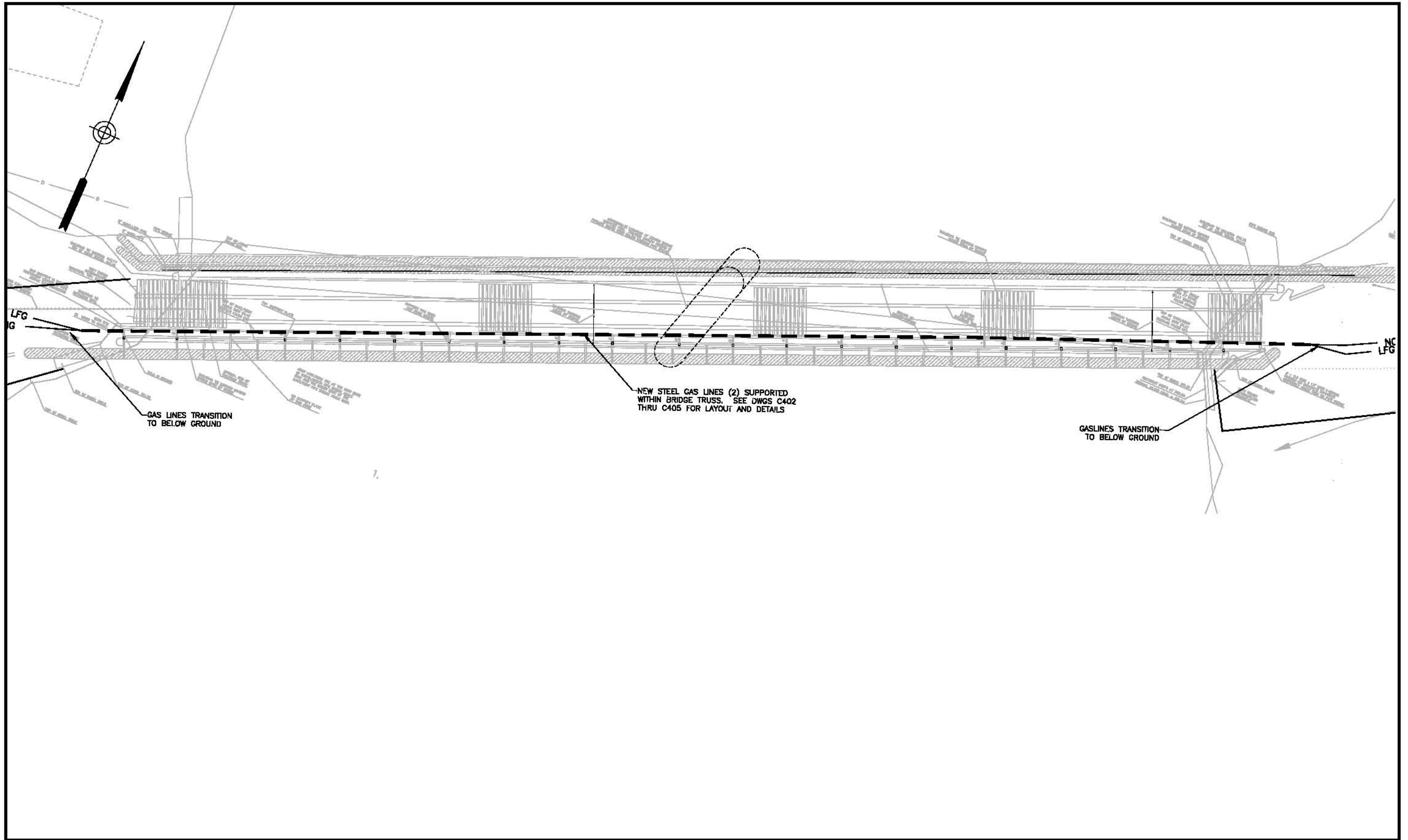
P:\10122010\10122010-Gorham_Paper_Gas_Line\MA\DWG\C401.dwg, Layout: C401, Wed, Jul 20, 2011, 2:46 PM, User: JMagu

C401

L.MAN:

US VIEW:

US:



| | | | |
|-----------|------------|---------------------|------|
| | | PROJ. MANAGER: JRM | SEAL |
| | | CHIEF DESIGNER: MMD | SEAL |
| | | REVIEWED BY: DATE | |
| | | | |
| | | | |
| 1. | 10/12/2010 | PRELIMINARY | EY |
| No. | DATE | DESCRIPTION | BY |
| REVISIONS | | | |

PRELIMINARY
NOT FOR CONSTRUCTION

| | |
|---------------|--------|
| SCALE: | |
| HORIZ.: | 1"=10' |
| VERT.: | |
| DATUM: | |
| HORIZ.: | |
| VERT.: | |
| 0 10 20 | |
| GRAPHIC SCALE | |

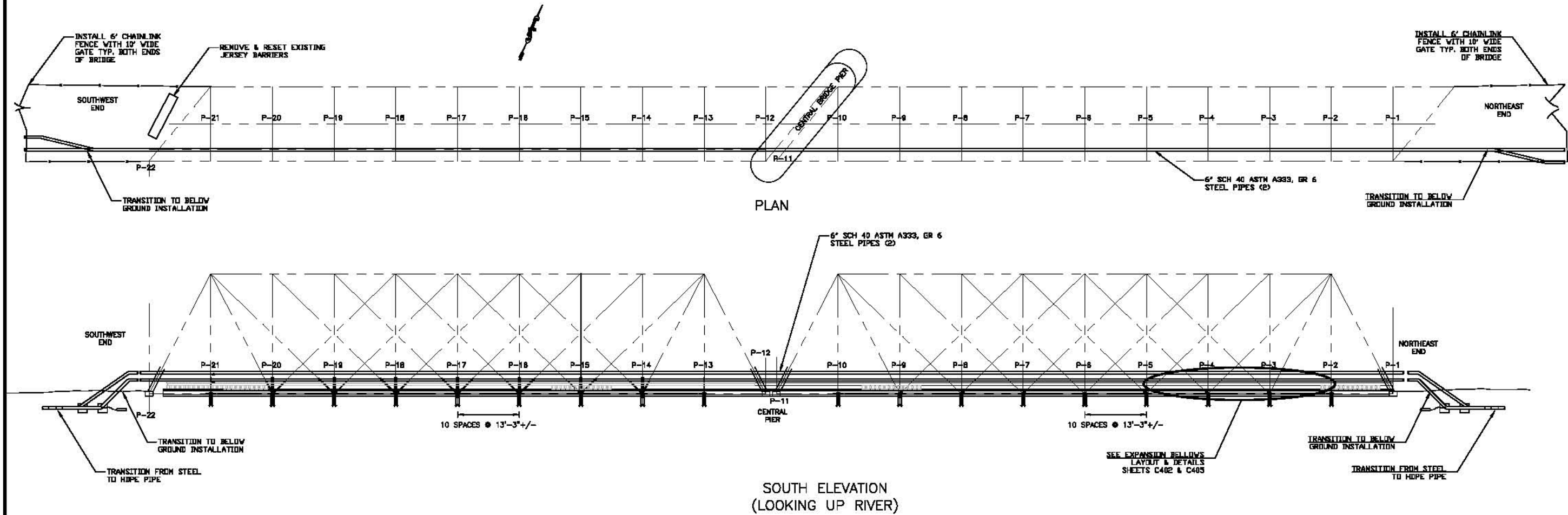


Maguire Group Inc.
Architects / Engineers / Planners
110 Corporate Drive, Suite 6
Portsmouth, New Hampshire 03801

GORHAM PAPER & TISSUE LLC.
BRIDGE CROSSING OVERALL PLAN
BERLIN
NEW HAMPSHIRE

| |
|------------------|
| PROJ. No.: 10101 |
| DATE: 7/20/2011 |
| C401 |

File Path: I:\Projects\18166-Gorham_Paper_Gas_Line\AEC\DWG\18166-Gorham_Paper_Gas_Line.dwg, Layout: C402, Wed, Jul 20, 2011, 2:58 PM, User: jmaguire
C402
L.MAN:
MSR VIEW:
LUCS:



| | | | | | |
|---------------|------|-------------|----|--|-----------------|
| 1. 10/22/2010 | | PRELIMINARY | BY | | PROJ. No: 10100 |
| No. | DATE | DESCRIPTION | BY | | DATE: 7/20/2011 |
| REVISIONS | | | | | |

| | | |
|---------------------|------|------|
| PROJ. MANAGER: JCM | SEAL | SEAL |
| CHIEF DESIGNER: MMD | | |
| REVIEWED BY: | | |
| | | |
| | | |
| | | |

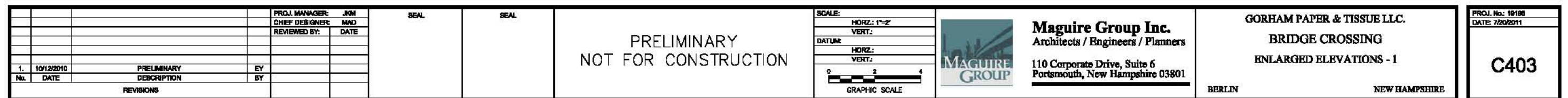
PRELIMINARY
NOT FOR CONSTRUCTION

SCALE:
HORIZ.: 1"=10'
VERT.:
D.A.T.U.M.:
HORIZ.:
VERT.:
0 10 20
GRAPHIC SCALE

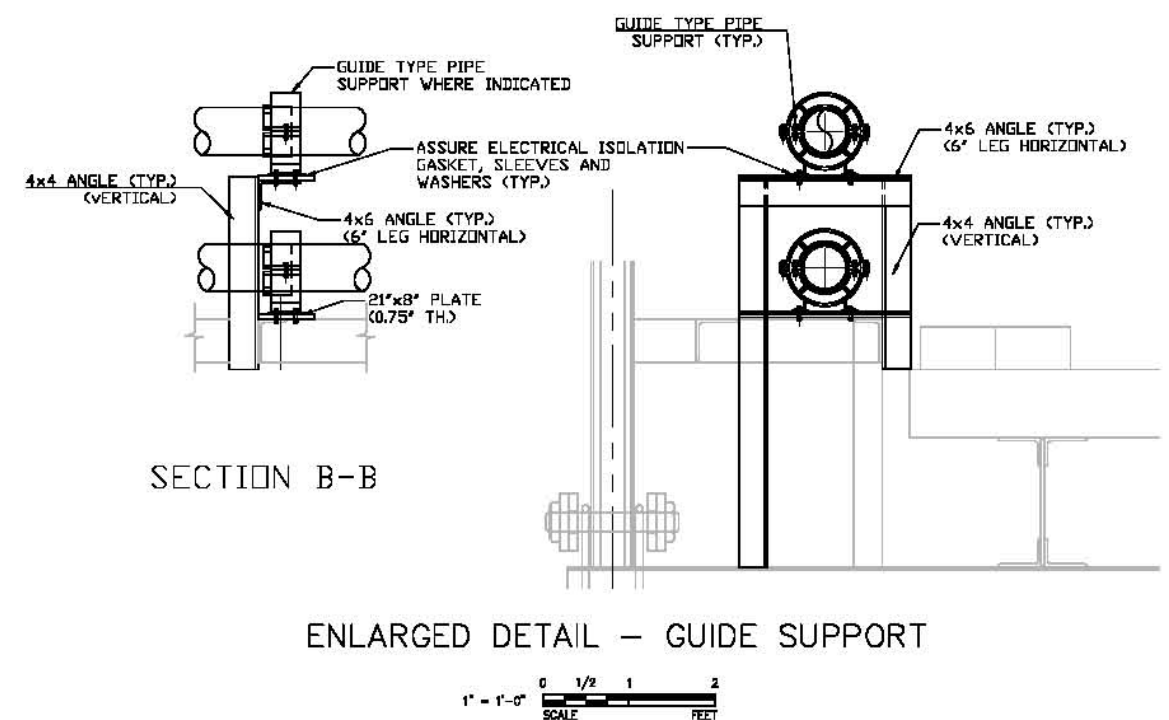
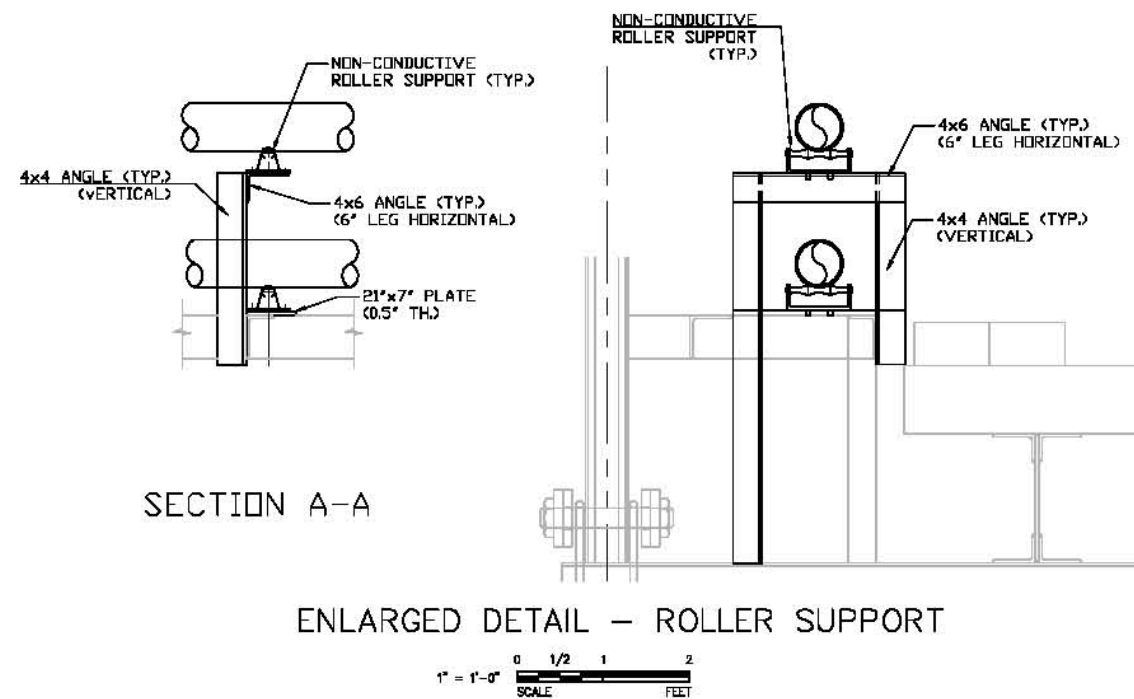
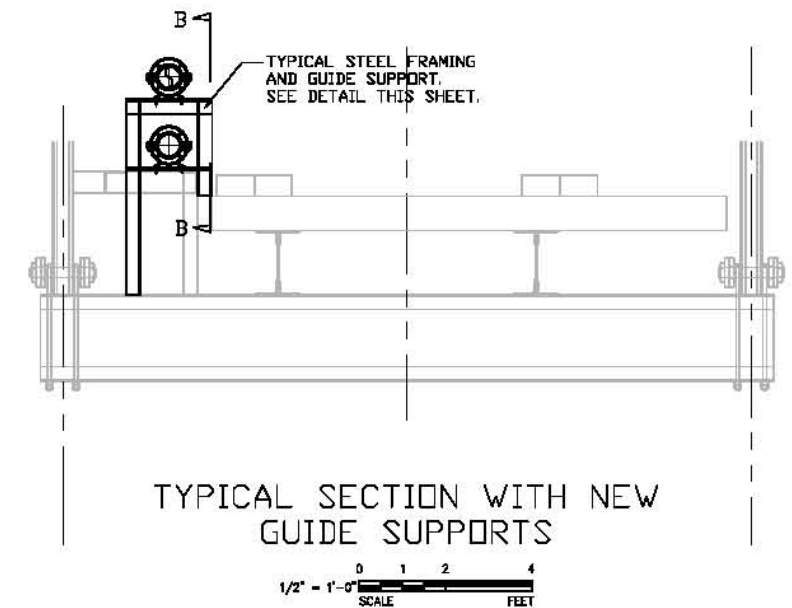
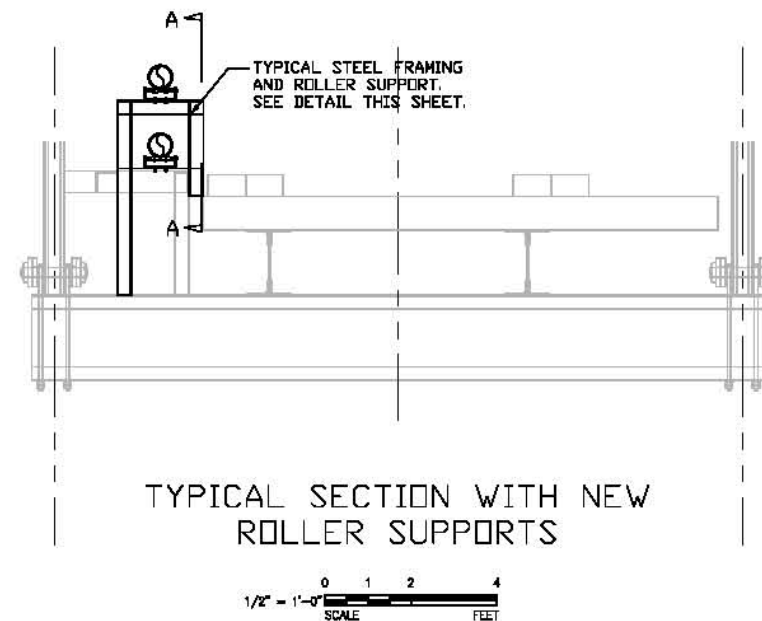
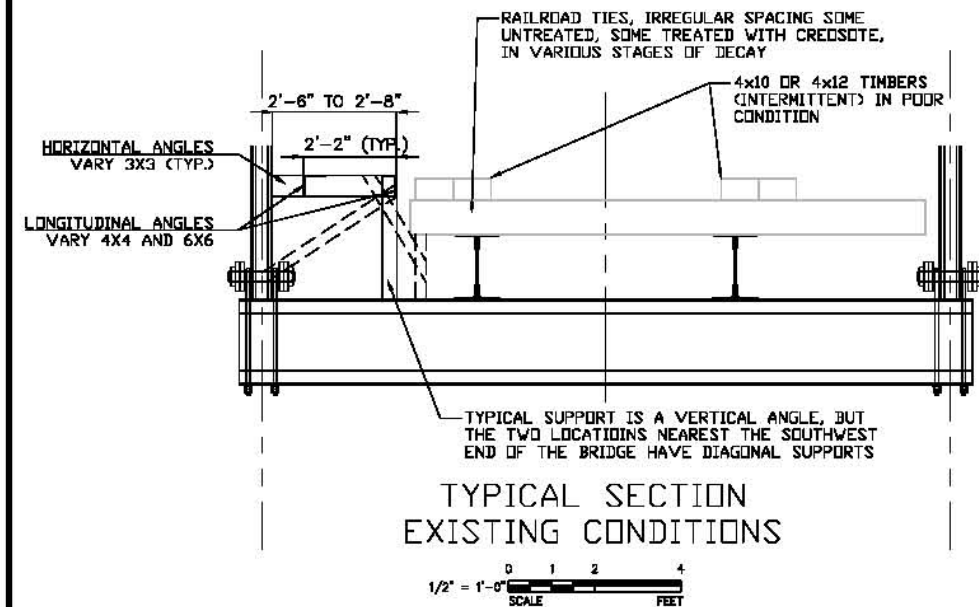
Maguire Group Inc.
Architects / Engineers / Planners
110 Corporate Drive, Suite 6
Portsmouth, New Hampshire 03801

GORHAM PAPER & TISSUE LLC.
BRIDGE CROSSING
GENERAL ARRANGEMENT
BERLIN
NEW HAMPSHIRE

C402



File Path: H:\Projects\10168-00-Gorham_Paper_Crossing\Drawings\Layout\0405_West_Jul_20_2011-2:58 PM User: jmaguire
LMS VIEW: LMAN: CTR: LGS:



| | | | | | |
|-----------|------------|-------------|---------------------|------|------|
| | | | PROJ. MANAGER: JMM | SEAL | SEAL |
| | | | CHIEF DESIGNER: MMD | | |
| | | | REVIEWED BY: DATE | | |
| 1. | 10/12/2010 | PRELIMINARY | EY | | |
| No. | DATE | DESCRIPTION | BY | | |
| REVISIONS | | | | | |

PRELIMINARY
NOT FOR CONSTRUCTION

| | |
|---------------|------------------|
| SCALE: | HORIZ.: AS SHOWN |
| | VERT.: |
| DATUM: | HORIZ.: |
| | VERT.: |
| GRAPHIC SCALE | |



Maguire Group Inc.
Architects / Engineers / Planners
110 Corporate Drive, Suite 6
Portsmouth, New Hampshire 03801

GORHAM PAPER & TISSUE LLC.
BRIDGE CROSSING
DETAILS -1

BERLIN

NEW HAMPSHIRE

PROJ. No: 10168
DATE: 7/20/2011

C405

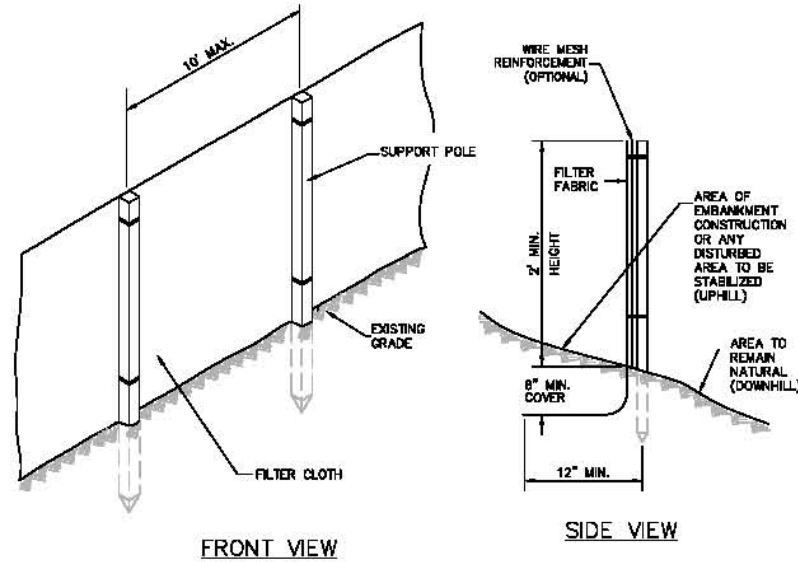
File Path: H:\Projects\10166-00-Gorham_Paper_Cas_Lines\ACAD\Civil\10166 C701-C703.dwg, Layout: C701, Wed, Jul 20, 2011 - 2:42 PM, User: jmaguire

C701

LMAN:

US VIEW:

LOGS:



FRONT VIEW

SIDE VIEW

CONSTRUCTION NOTES FOR FABRICATED SILT FENCE

1. WIRE MESH TO BE FASTENED SECURELY TO FENCE POSTS WITH WIRE TIES OR STAPLES. PRE-FABRICATED SILT FENCE WITH INTEGRAL REINFORCEMENT MAY BE USED IN LIEU OF WIRE MESH.
2. FILTER CLOTH TO BE FASTENED SECURELY TO WOVEN WIRE FENCE WITH TIES SPACED EVERY 24" AT TOP AND MID SECTION.
3. WHEN TWO SECTIONS OF FILTER CLOTH ADJOIN EACH OTHER, THEY SHALL BE OVERLAPPED BY SIX INCHES AND FOLDED.
4. MAINTENANCE SHALL BE PERFORMED AS NEEDED AND MATERIAL REMOVED WHEN "BULGES" DEVELOP IN THE SILT FENCE.
5. PLACE SILT FENCE 5 FT BEYOND THE TOE OF SLOPE OR ON THE CONTOUR. AT THE END OF SILT FENCE RUNS, FLARE UPHILL.
6. PROVIDE WOVEN WIRE FENCE AND/OR CLOSER FENCE POST SPACING IN AREAS WHERE HIGH RUNOFF VOLUMES ARE ANTICIPATED, OR IN LOW SPOTS WHERE SEDIMENT WILL BE COLLECTED.
7. REMOVE SILT FENCE, AS DIRECTED, WHEN NO LONGER NEEDED. BEFORE THE SILT FENCE IS REMOVED, STABILIZE WITH VEGETATION ANY SEDIMENT WHICH IS PERMITTED TO REMAIN IN PLACE.

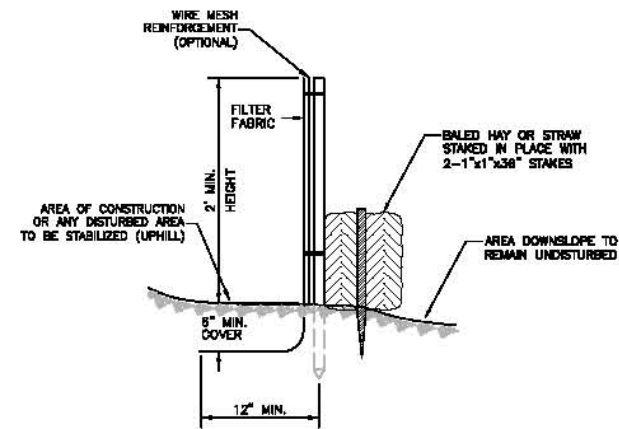
POSTS: STEEL, EITHER T OR U TYPE OR 2" HARDWOOD

FENCE: WOVEN WIRE, 14 GAUGE 6" MAX. MESH OPENING

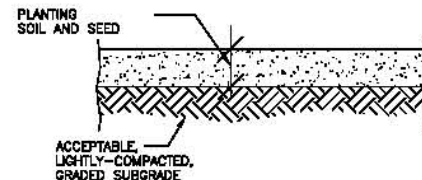
FILTER CLOTH: FILTER K, MIRAFI 100X, STABILINKA T140N OR APPROVED EQUAL

PREFABRICATED UNIT: GEOFAB, ENVIROFENCE, OR APPROVED EQUAL

SILT FENCE
NOT TO SCALE

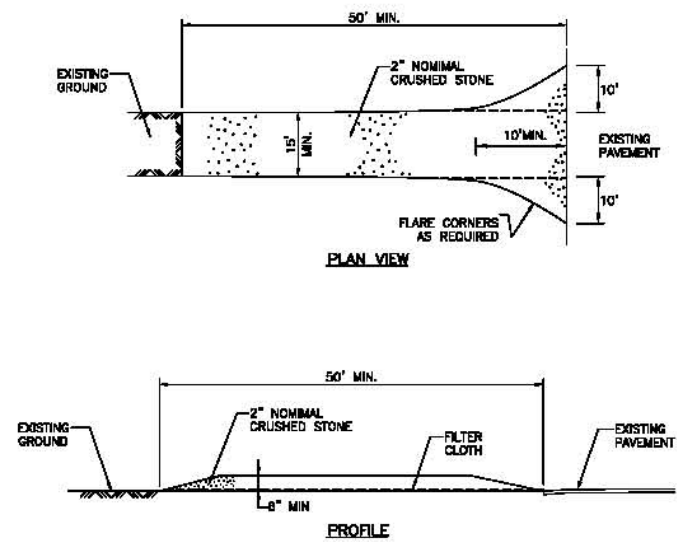


COMBINED SILT FENCE & HAY BALE
NOT TO SCALE

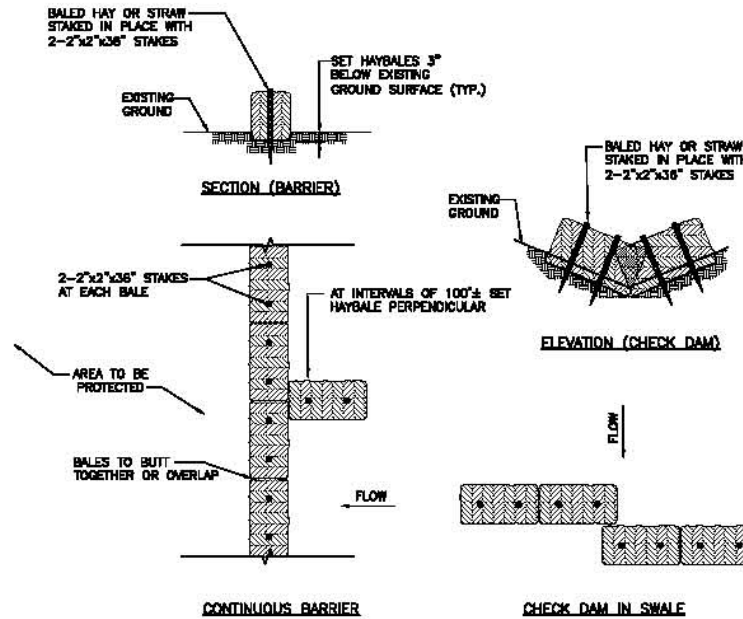


SEEDING DETAIL
NOT TO SCALE

- NOTE:
1. USE 4" LOAM PLANTING SOIL FOR PAVED ROADWAY EDGE AND PERIMETER AROUND M&R STATION SITE. USE REGRADED EXISTING SOIL FOR ALL OTHER AREAS. LOAM SHALL BE FRABLE TOPSOIL STRIPPED FROM ON-SITE. LOAM SHALL BE FREE FROM REFUSE, STONES LARGER THAN 2 INCH AND ROOTS LARGER THAN 1 INCH.
 2. STRIP AND REUSE ORGANIC FOREST SOIL MATERIAL IN ALL FORESTED AREAS.
 3. IN GRAVEL ROADS, RAILROAD YARDS AND OTHER AREAS, PLANTING SOIL IS NOT REQUIRED. REPLACE EXISTING SURFACE MATERIAL IN-KIND AND SEED (HYDRO-SEED) AS DIRECTED.

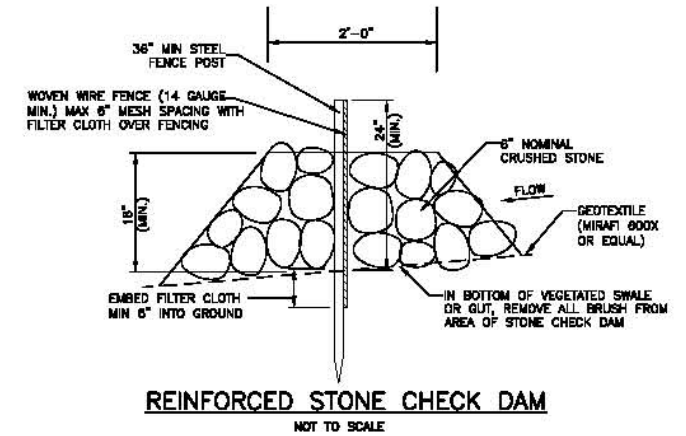


STABILIZED CONSTRUCTION ENTRANCE DETAIL
NOT TO SCALE

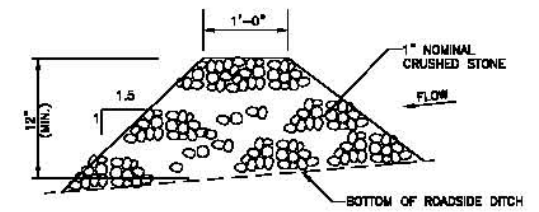


HAY BALE DETAIL
NOT TO SCALE

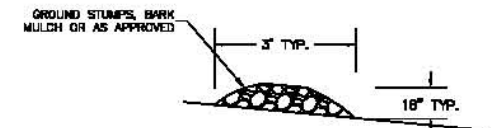
NOTE:
TO BE INSTALLED IN LOCATIONS SHOWN ON THE PLAN ON SENSITIVE AREAS, SUCH AS SLOPE CUTS AND TO PROTECT WETLAND AREAS FROM SILTATION. AT APPROXIMATELY 200-FOOT INTERVALS, A HAY BALE IS TO ABUT PERPENDICULARLY.



REINFORCED STONE CHECK DAM
NOT TO SCALE



STONE CHECK DAM ROADSIDE DITCHES
NOT TO SCALE



MULCH BERM DETAIL
NOT TO SCALE

STORMWATER POLLUTION PREVENTION NOTES:

1. REFER TO STORMWATER POLLUTION PREVENTION NOTES ON SHEET C001.
2. WORK SHALL BE ACCOMPLISHED IN ACCORDANCE WITH WETLAND PERMIT AND OTHER PERMIT CONDITIONS.
3. WORK SHALL BE ACCOMPLISHED IN ACCORDANCE WITH SECTION 045 AND OTHER APPLICABLE SECTIONS OF THE NHDOT STANDARD SPECIFICATIONS.
4. PRIMARY SEDIMENT & EROSION CONTROL METHOD SHALL BE SILT FENCE OR MULCH ("STUMP GRINDINGS") BERM.
5. SISAL LOGS, COIR LOGS, STRAW WATTLES OR OTHER NATURAL FIBER PRODUCTS (MINIMUM 12-INCH DIAMETER) MAY BE USED AS AN ALTERNATE TO SILT FENCE WHERE ALLOWED BY PERMITS.
6. HAY BALES AND/OR COMBINED SILT FENCE & HAY BALE BARRIER SHALL BE USED WHERE DIRECTED BY OWNER, ENGINEER OR AS OTHERWISE REQUIRED BY PERMITS OR REGULATIONS.

| | | | | |
|-----|------------|---------------------|------|------|
| | | PROJ. MANAGER: JOM | SEAL | SEAL |
| | | CHIEF DESIGNER: MMD | | |
| | | REVIEWED BY: DATE | | |
| 1. | 10/12/2010 | PRELIMINARY | EY | |
| No. | DATE | DESCRIPTION | BY | |
| | | REVISIONS | | |

PRELIMINARY
NOT FOR CONSTRUCTION

| | |
|--------|------------------|
| SCALE: | HORIZ.: AS SHOWN |
| | VERT.: |
| DATUM: | HORIZ.: |
| | VERT.: |
| | GRAPHIC SCALE |



Maguire Group Inc.
Architects / Engineers / Planners
110 Corporate Drive, Suite 6
Portsmouth, New Hampshire 03801

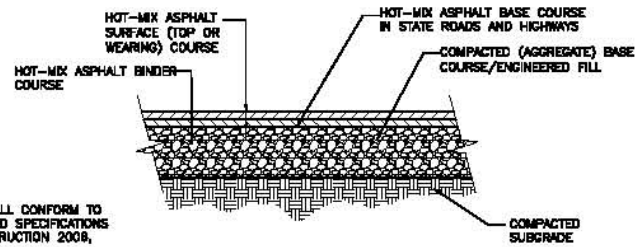
GORHAM PAPER & TISSUE LLC.
SEDIMENT & EROSION CONTROL DETAILS
BERLIN
NEW HAMPSHIRE

PROJ. No: 10106
DATE: 7/20/2011
C701

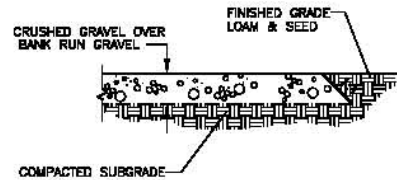
File Path: H:\Projects\10168.00-Gorham_Paper_Case_Lines\MAJOR\10168.00-C702-C703.dwg, Layout: C702, Wed, Jul 20, 2011 - 2:42 PM, User: jmaguire

US VIEW: L MAIN: C702: LGS:

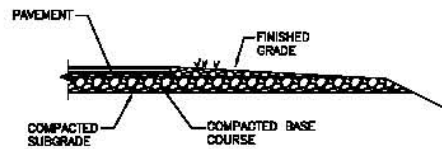
NOTE:
HOT-MIX ASPHALT SHALL CONFORM TO
NHDOT STATE STANDARD SPECIFICATIONS
FOR ROAD AND CONSTRUCTION 2008,
SECTION 400.



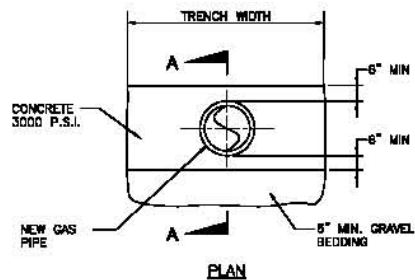
**BITUMINOUS CONCRETE
PAVEMENT DETAIL**
NOT TO SCALE



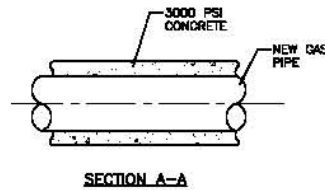
**GRAVEL DRIVEWAY
DETAIL**
NOT TO SCALE



SHOULDER DETAIL
NOT TO SCALE



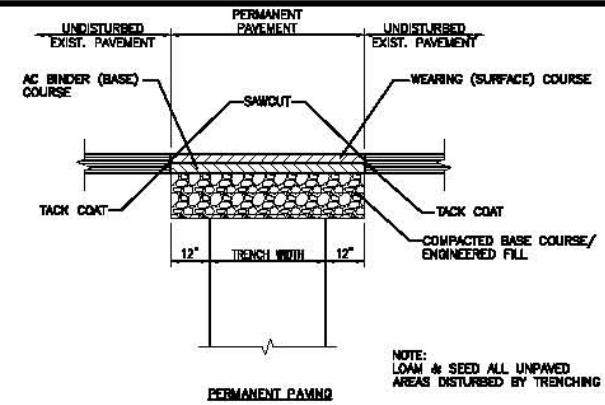
**CONCRETE ENCASEMENT
DETAIL**
NOT TO SCALE



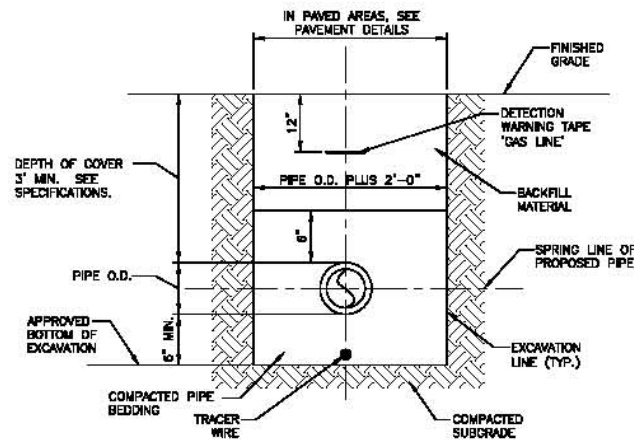
NOTE:
CONCRETE ENCASEMENT TO BE UTILIZED WHEN DIRECTED
BY THE OWNER OR ENGINEER

- ASPHALT NOTES:**
- HOT-MIX ASPHALT SHALL CONFORM TO NHDOT STATE STANDARD SPECIFICATIONS SECTION 400:
BASE COURSE (BINDER) - TYPE A OR B.
WEARING COURSE (SURFACE COURSE) - TYPE E OR F.
 - PAVEMENT TYPES AND ITEM NOS. BELOW REFER TO NHDOT STANDARD SPECIFICATIONS FOR ROAD AND BRIDGE CONSTRUCTION, LATEST EDITION.

| | HOT-MIX ASPHALT | | | |
|---|------------------------------|---------------------------|---------------------------|-----------------------|
| | WEARING COURSE (TYPE "E") | BASE COURSE (TYPE "B") | BASE COURSE (TYPE "A") | GRVEL (ITEM 304.2) |
| STATE HIGHWAYS | 1-1/2" | 2" | 2.5" | 12" |
| MUNICIPAL STREETS* | 1" | 2" | - | 12" |
| *(Match existing pavement thickness if greater than dimensions indicated) | | | | |
| GRAVEL ROADS | - | - | - | 12" |
| GRAVEL DRIVEWAYS | - | - | - | 8" |

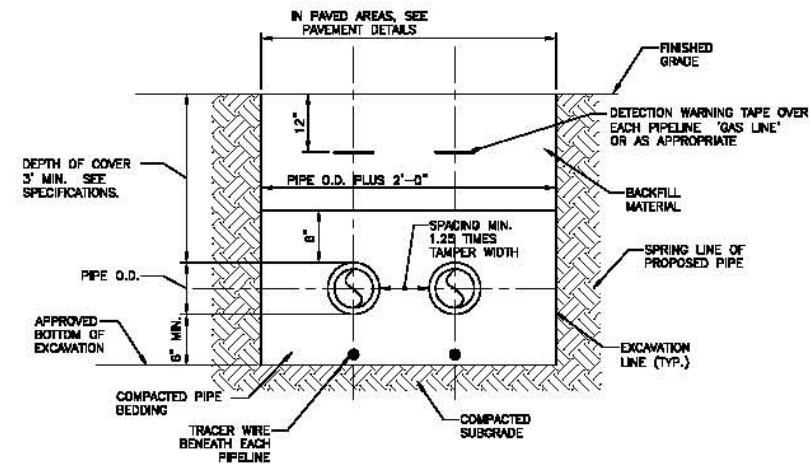


**PAVEMENT RESTORATION
DETAIL**
NOT TO SCALE



NOTE:
PIPE SHALL BE BEDDED IN NATIVE MATERIAL PROVIDED
IT CONTAINS MATERIAL NO LARGER THAN 3/4 INCHES,
CONFORMS TO NHDOT SPECIFICATIONS AND PIPE
MANUFACTURER'S RECOMMENDATIONS

PIPE TRENCH DETAIL
NOT TO SCALE



**MULTIPLE UTILITY
TRENCH DETAIL**
NOT TO SCALE

- PIPE BEDDING AND BACKFILL NOTES:**
- BEDDING MATERIALS (PIPE BEDDING) - INCLUDING BACKFILL TO A LEVEL 6 INCHES ABOVE THE TOP OF PIPE - SHALL HAVE NO PARTICLES LARGER THAN 3/4 INCH.
 - BEDDING AND BACKFILL TO A DEPTH OF 6 INCHES ABOVE THE TOP OF PIPE SHALL BE COMPACTED TO A MINIMUM OF 90% MODIFIED PROCTOR.
 - BACKFILL MATERIAL FROM 6 INCHES TO 12 INCHES ABOVE THE TOP OF THE PIPE SHALL HAVE NO STONES LARGER THAN 3 INCHES.
 - BACKFILL MATERIAL FROM 12 INCHES TO 18 INCHES ABOVE THE TOP OF THE PIPE SHALL HAVE NO ROCKS LARGER THAN 6 INCHES.
 - BACKFILL MATERIAL ABOVE 18 INCHES ABOVE THE TOP OF THE PIPE (WHICH IS TYPICALLY ABOUT HALF OF THE DEPTH OF BURIAL) SHALL HAVE NO ROCKS OR PIECES OF LEDGE LARGER THAN 24 INCHES.

PRELIMINARY
NOT FOR CONSTRUCTION

SCALE:
HORIZ.: AS SHOWN
VERT.:
DATE:
HORIZ.:
VERT.:
GRAPHIC SCALE



Maguire Group Inc.
Architects / Engineers / Planners
110 Corporate Drive, Suite 6
Portsmouth, New Hampshire 03801

GORHAM PAPER & TISSUE LLC.
TRENCH & PAVEMENT DETAILS

BERLIN

NEW HAMPSHIRE

PROJ. No: 10168
DATE: 7/20/2011

C702

| |
|-----------------|
| PROJ. No: 10196 |
| DATE: 7/20/2011 |
| C703 |